

MTG Status and Transition

Sally Wannop
User Relations Manager

17th UFA Session 1 17 September 2024





Start of MTG services

Plans to release data and transition from pre-operational to operational services

MTG and Africa

Plans to release FCI service on EUMETCast Africa

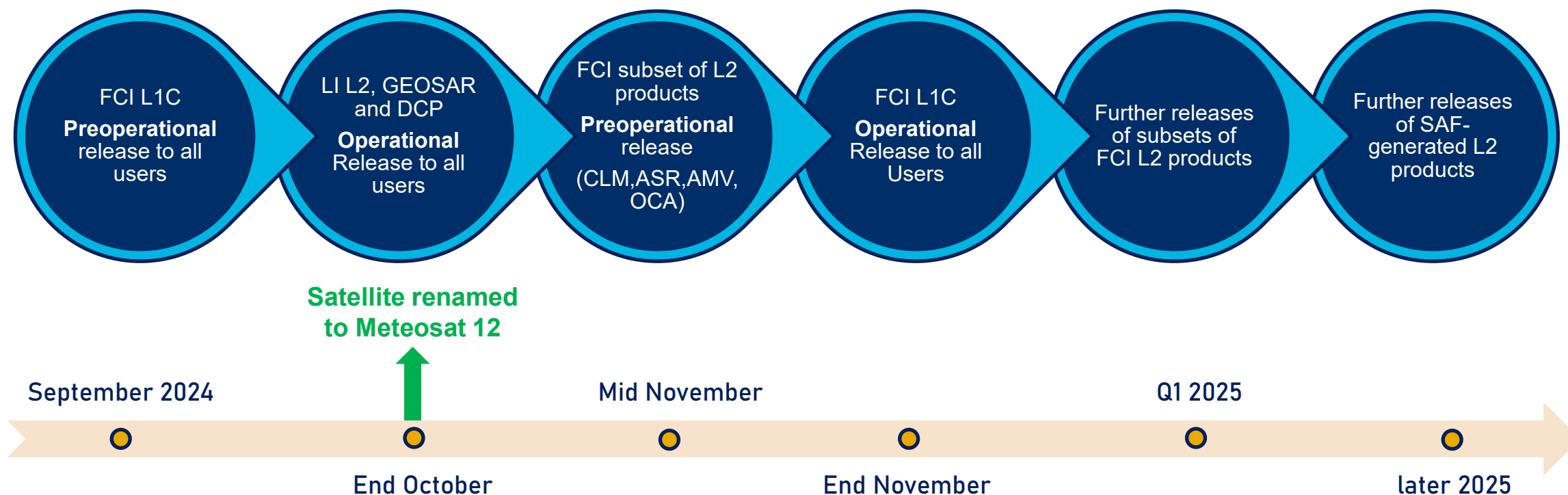
Transition period

Parallel MSG and MTG 0° services



MTG-I1 sequence to operations: Per product group

www.eumetsat.int

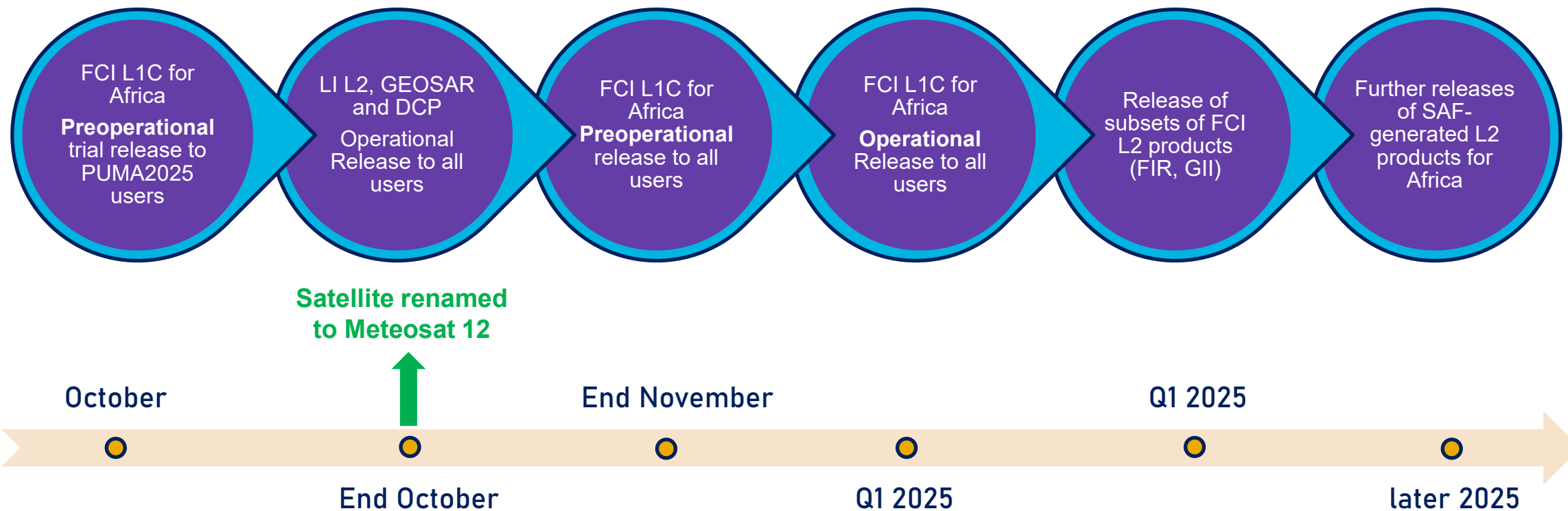


Note: Applies to data provided through EUMETCast-Europe, EUMETCast Terrestrial, Data Store, SAF archives, EUMETView and WIS 2.0

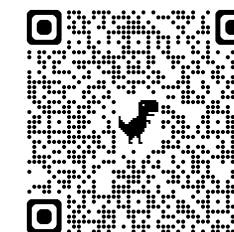


MTG-I1 sequence to operations: Per product group

www.eumetsat.int



Note: Applies to data provided through EUMETCast Africa. See: MTG Africa data service guide <https://user.eumetsat.int/resources/user-guides/mtg-africa-data-service-guide>



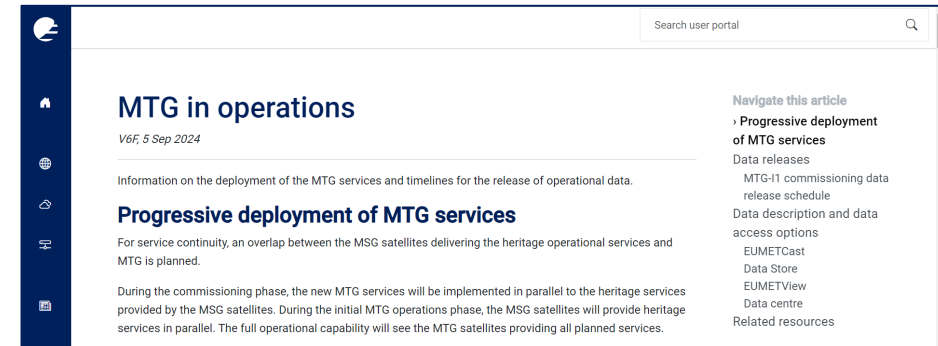
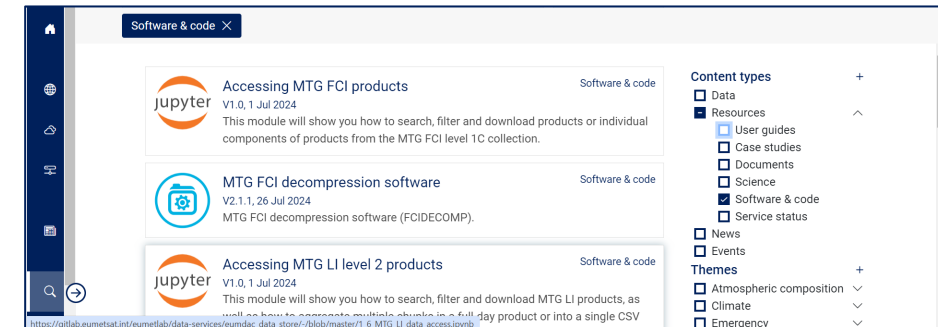
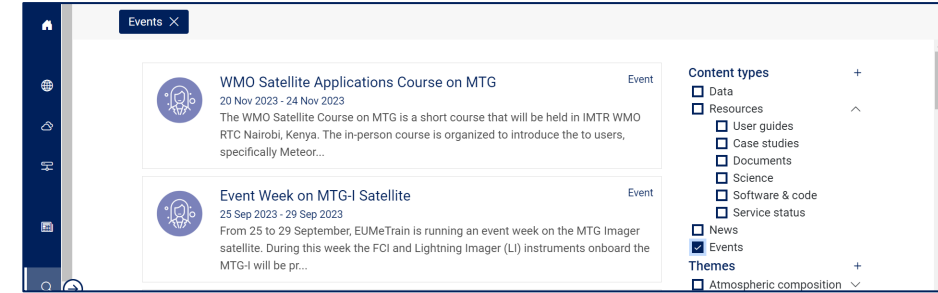


- **Data access via EUMETCast Africa:**
 - Started pre-operational Lightning Imager L2 accumulated flash area in July
 - Plan to start pre-operational MTG Africa FCI service - modified FCI L1c data and 5 centrally generated RGBs:
 - For trial users in October
 - All other users of EUMETCast Africa in November
 - Progressively add the level 2 data to the service during 2025
- **Data access via EUMETCast Europe, Terrestrial, Data Store:**
 - Started pre-operational Lightning Imager L2 data (all products) in July
 - Plan to start pre-operational MTG FCI L1c data to all users on 24 September
 - Progressively add level 2 data during 2025
- **EUMETView:**
 - Release of initial set of visualisations (single channel and RGBs) to all on 24 September
 - Progressively enhance the service with new visualisations (including LI imagery)



MTG readiness: User support & upcoming trainings

- The EUMETSAT User portal provides guidance material, links to Jupyter Notebooks and upcoming training events:
 - EUMeTrain event week on FCI and LI 25-29 September
 - EUMETSAT FCI short course planned for 8 October
- Start using the data:
 - The first FCI visualisation on EUMETView from 24 September !!
 - FCI L1c and LI L2 data can be accessed from the Data Store



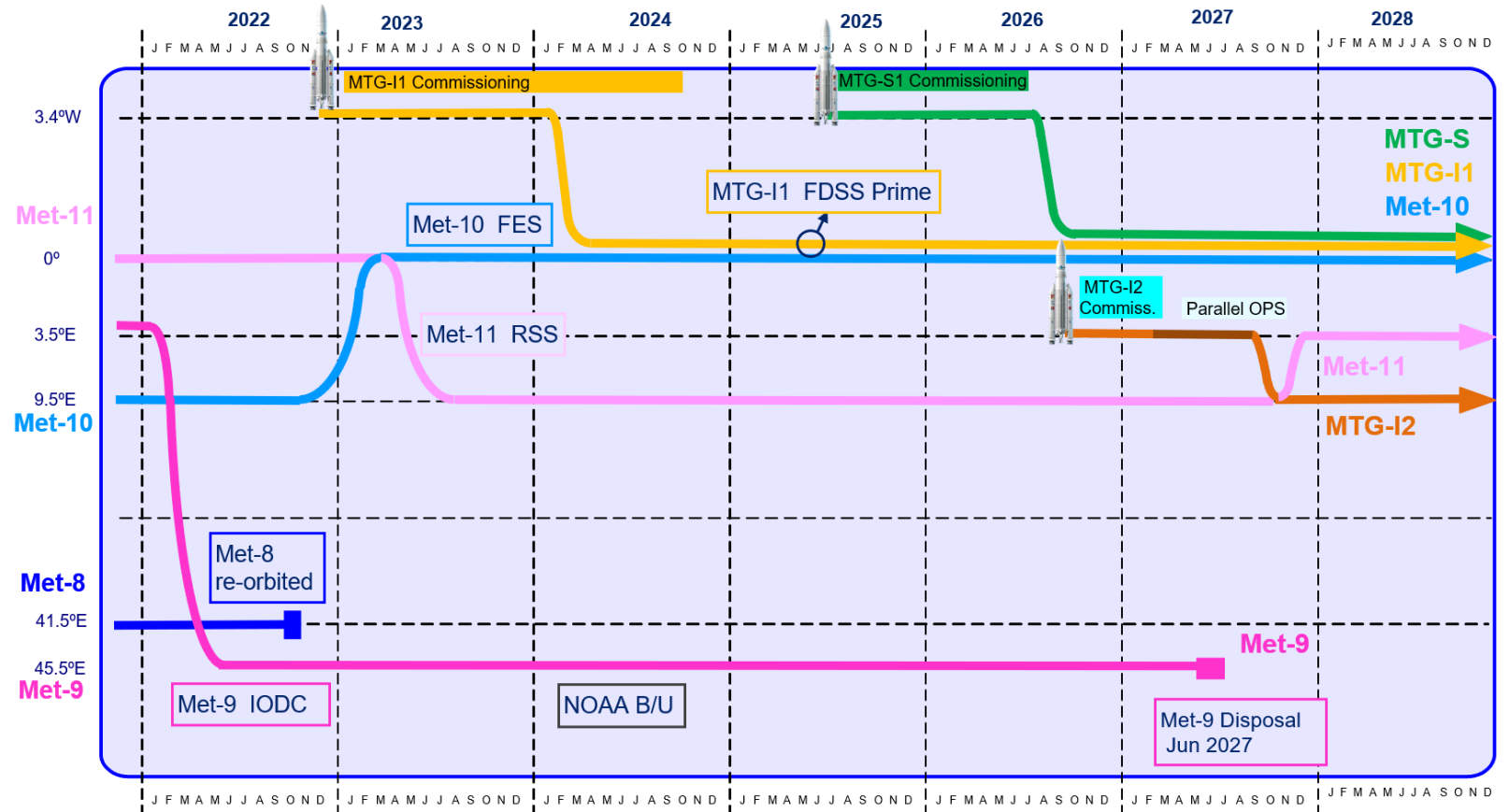


Service Status: Geostationary – Meteosat lifetime/constellation

Meteosat satellite lifetime expectations:

Satellite	Launched	Remaining RSS cycles	Inclination >8°	Feasible Technical End-of-Life
Meteosat-9	Dec 2005	None	Q4 2024	Q2 2027
Meteosat-10	July 2012	0.25 years (for emergency cover)	Q3 2030	Q3 2030
Meteosat-11	July 2015	4.5 years	Q4 2033 (latest)	Q4 2033

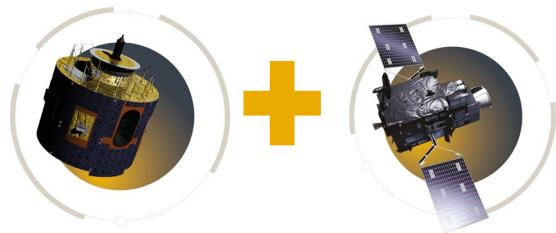
Meteosat satellite constellation current & planned deployment:



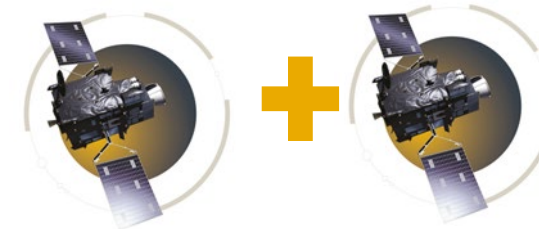


MSG to MTG 0° service transition: end 2024 to early 2027

www.eumetsat.int



Start of Met-12
and Met-10
parallel
operations
Nov 2024



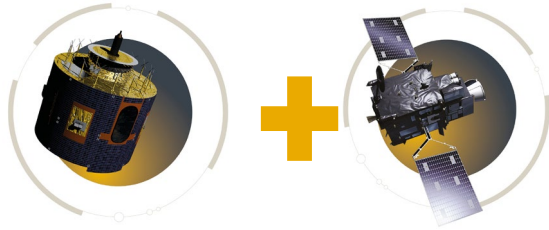
End of Met-10 0°
operations
end 2026

Launch & commissioning
of MTG-I2
[European RSS and 0°
backup]
mid 2026

Full MTG imaging
service capability
[0° & backup]
early 2027 onwards



MSG to MTG: operational priorities for the 0° services



Parallel operations phase end 2024 to end 2025



<p>1. Met-10 SEVIRI Met-10 is prime</p> <p>2. MTG-I1 LI + FCI in commissioning</p>	<p>1. Met-10 SEVIRI Met-10 is prime</p> <p>2. Met-12 LI operational</p> <p>3. Met-12 FCI commissioning</p> <p><i>User notifications will begin for Met-12</i></p>	<p>1. Met-10 SEVIRI Met-10 is prime</p> <p>2. Met-12 LI operational</p> <p>3. Met-12 FCI backup operational</p>	<p>1. Met-12 FCI Met-12 is prime</p> <p>2. Met-12 LI operational</p> <p>3. Met-10 SEVIRI backup operational</p>
---	---	---	---



What this means for your service: operations & readiness

www.eumetsat.int

- **PUMA2025 beneficiary countries:**
 - Between November 2024 and end 2025:
 - If there is significant outage to the Met-10 satellite users **without PUMA2025 stations** will be impacted
 - Mitigation options are to use IODC and EUMETView visualisations
 - Once all PUMA2025 stations are installed users can switch between FCI and SEVIRI data in the case of any outages
- **For North African countries:**
 - If there is significant outage to the Met-10 satellite users **without FCI processing capabilities** will be impacted
 - Mitigation options are to use RSS, IODC and EUMETView visualisations
- **Parallel FCI and SEVIRI 0 ° services:**
 - To allow users time for FCI familiarisation EUMETSAT will continue to disseminate on all EUMETCast services the 0° SEVIRI data until at least end 2026
- Any concerns during the transition phase, please contact us: ops@eumetsat.int

- Tecnavia has started the rollout of PUMA2025 stations
- To assist in the smooth rollout, we urgently need the latest point of contact for each PUMA2025 station
- During the Forum, please contact Erdem Erdi to confirm the person responsible for your station and their EOP account



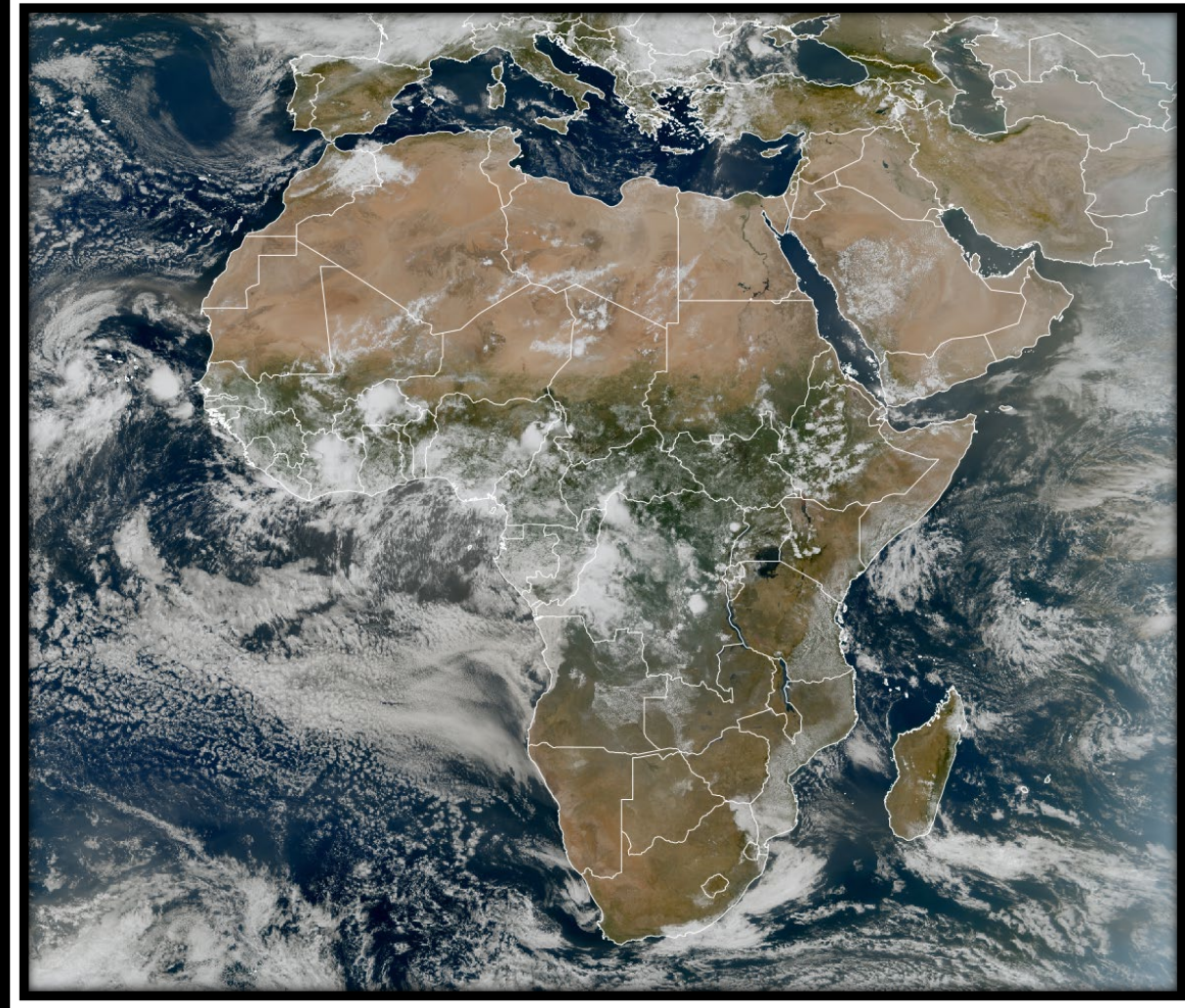
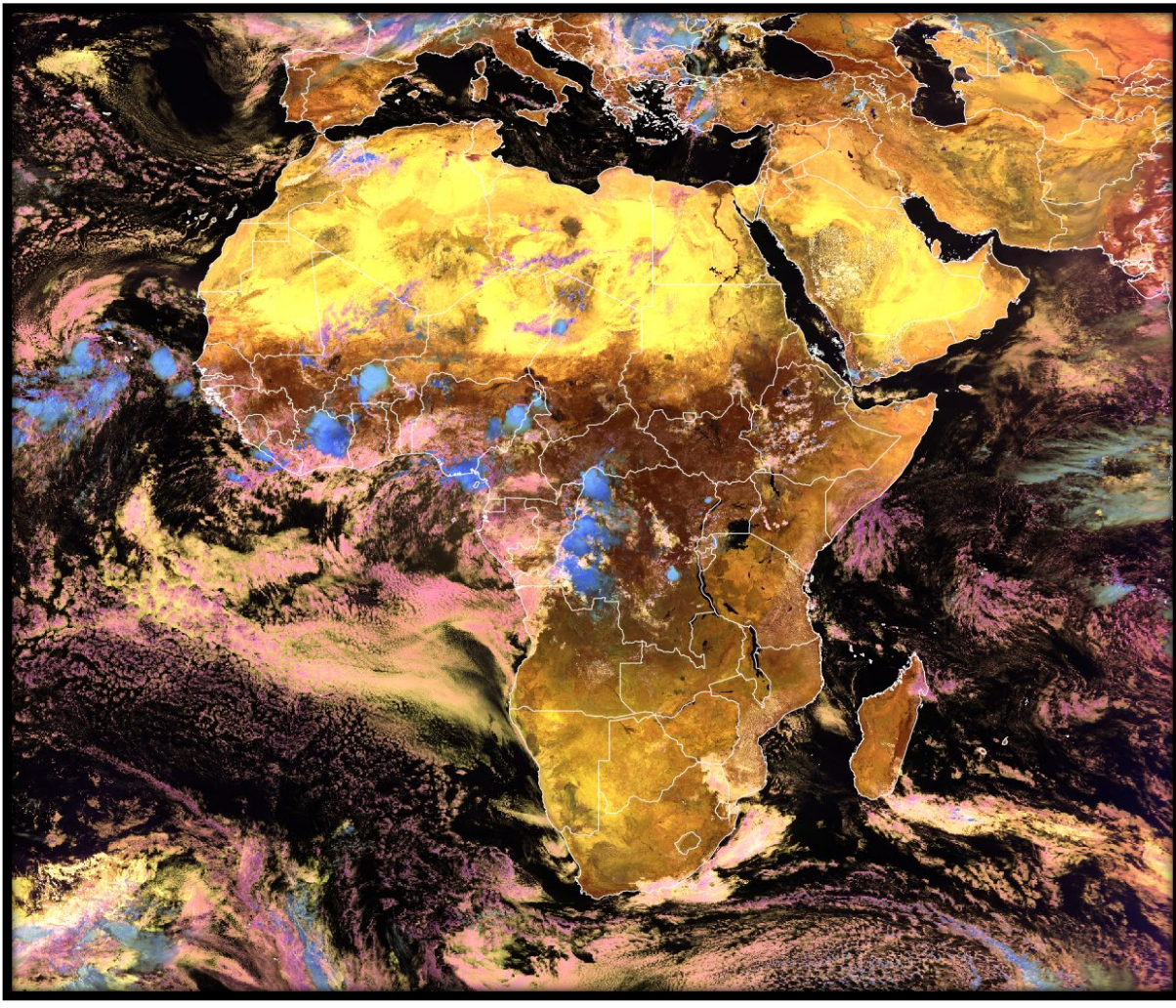
African Union Commission (AUC) team coordinating the deployment of the new PUMA station for the EU-funded ClimSA project visited EUMETSAT in May 2024.

Thank you for your support in this matter!!



Meteosat 12 is coming ...

www.eumetsat.int





Thank you!
Questions are welcome.